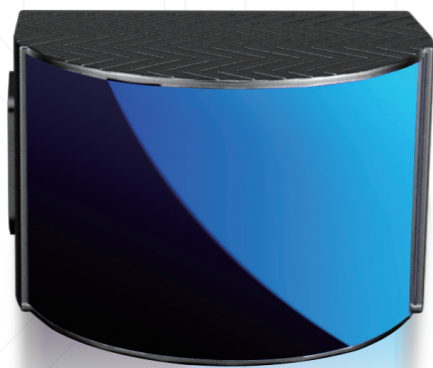


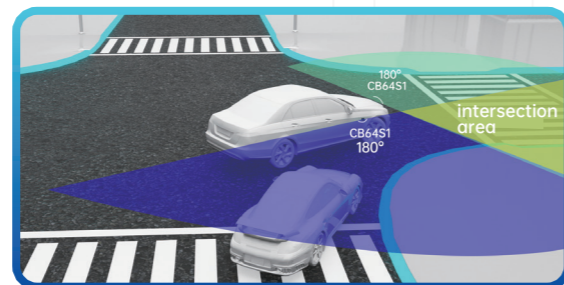
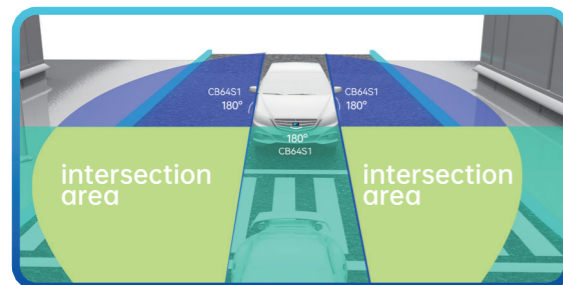


Wide field of view (FOV) LiDAR

905nm CB64S1/CH64W



CB64S1/CH64W wide field of view (FOV) LiDAR is specially designed for cleaning up blind areas. It has an ultra-wide field FOV of 180°x40°, and the measurement accuracy is accurate to ±3cm. It can efficiently identify obstacles within a short range and bring accurate environmental perception to the driving blind areas of automobiles, robots and AGV.



		CB64S1	CH64W
Laser	Wavelength	905nm	905nm
	Laser Class	Class I (IEC-60825)	Class I (IEC-60825)
SPEC	Channels	64	64
	Detection Method	TOF	TOF
	Detection Range	100m(45m@10%)	100m(45m@10%)
	Range Accuracy	±3cm	±3cm
FOV	Horizontal	180°	180°
	Vertical	40°(-25°~15°)	40°(-25°~15°)
Angular Resolution	Horizontal	0.12°:10Hz / 0.16°:10Hz / 0.24°:10Hz / 0.36°:10Hz	0.12°:10Hz / 0.16°:10Hz / 0.24°:10Hz / 0.36°:10Hz
	Vertical	0.63°	0.63°
	FPS	10Hz、20Hz	10Hz、20Hz
Export	Data Point Generating Rate (pts/sec)	1,010,000 760,000 500,000 330,000	1,010,000 760,000 500,000 330,000
	Communication Interface	Automotive Ethernet	Industrial Ethernet
Electric	Input Voltage	9V~36V DC	9V~36V DC
	Power Consumption	15W	15W
Environment	Anti-interference	Laser Code	Laser Code
	AUTOSAR	Support (A) / Not support (I)	-
	IP Grade	IP6K9K	IP6K9K
	Operating Temperature	-40°C~85°C	-40°C~85°C
	Storage Temperature	-40°C~105°C	-40°C~105°C
	Vibration Test	5Hz-2000Hz, 3G rms	5Hz-2000Hz, 3G rms
	Shock Test	500m/sec ² , lasting for 11ms	500m/sec ² , lasting for 11ms
Machine	Weight	1kg	1kg
	Dimensions (LxWxH)	116x90x76 mm	116x90x76 mm

+86 755-2324-2821 MARKET@LSLIDAR.COM

[twitter](#)
[YouTube](#)
[Meta](#)
[LinkedIn](#)
 LSLIDAR

FOLLOW LSLIDAR'S OFFICIAL ACCOUNTS TO KNOW MORE